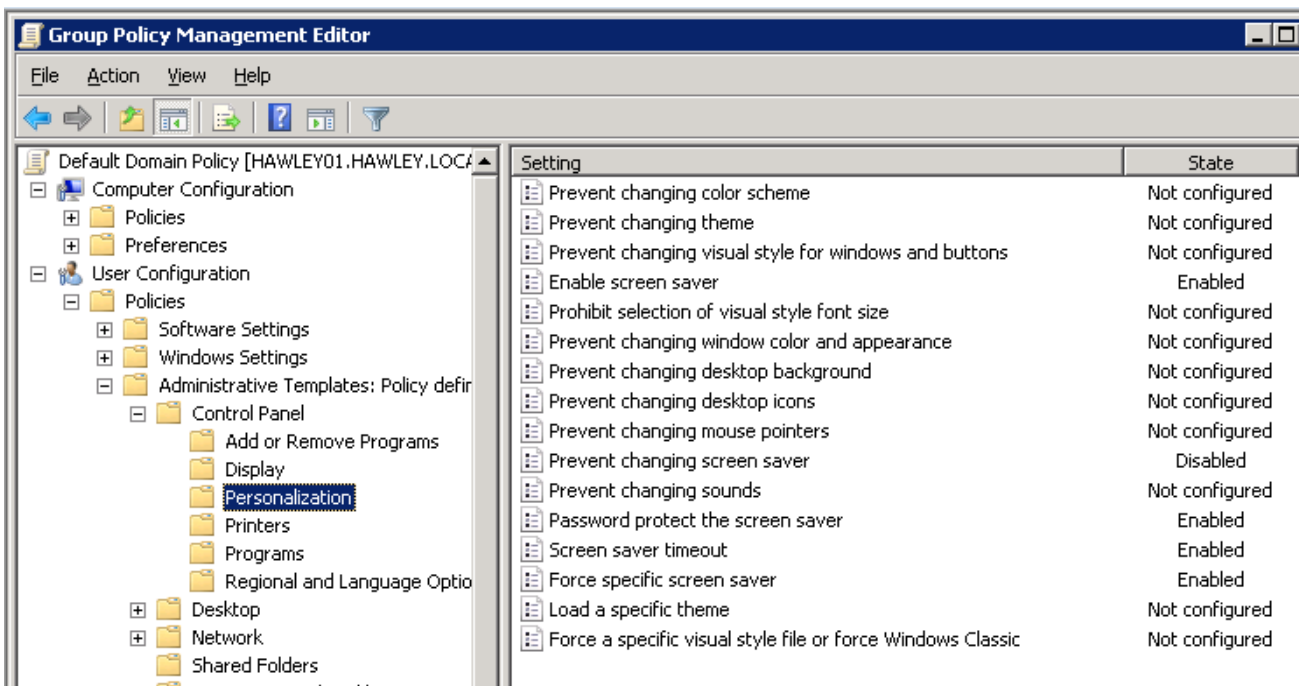


- Set up a shared folder on the server e.g. D:\Shared\Screensaver and shared as Screensaver\$
- Ensure that all users have "Read" permission
- Place some pictures in it.
- Now, on a Win 7 PC configure the 'Photos' screen saver and manually input the path to the pictures using the UNC notation e.g. \\server\screensaver\$
- Check that it works.
- Now open Regedit and export the key: **HKCU\Software\Microsoft\Windows Photo Viewer\Slideshow\Screensaver** Note that this step is required as the path to the pictures is encrypted and we need the encrypted string pushed out to all PC's via GPO.

Next, go to the server and edit the Default Domain Policy,
User Configuration \ Policies \ Administrative Templates \ Control Panel \ Personalization.....

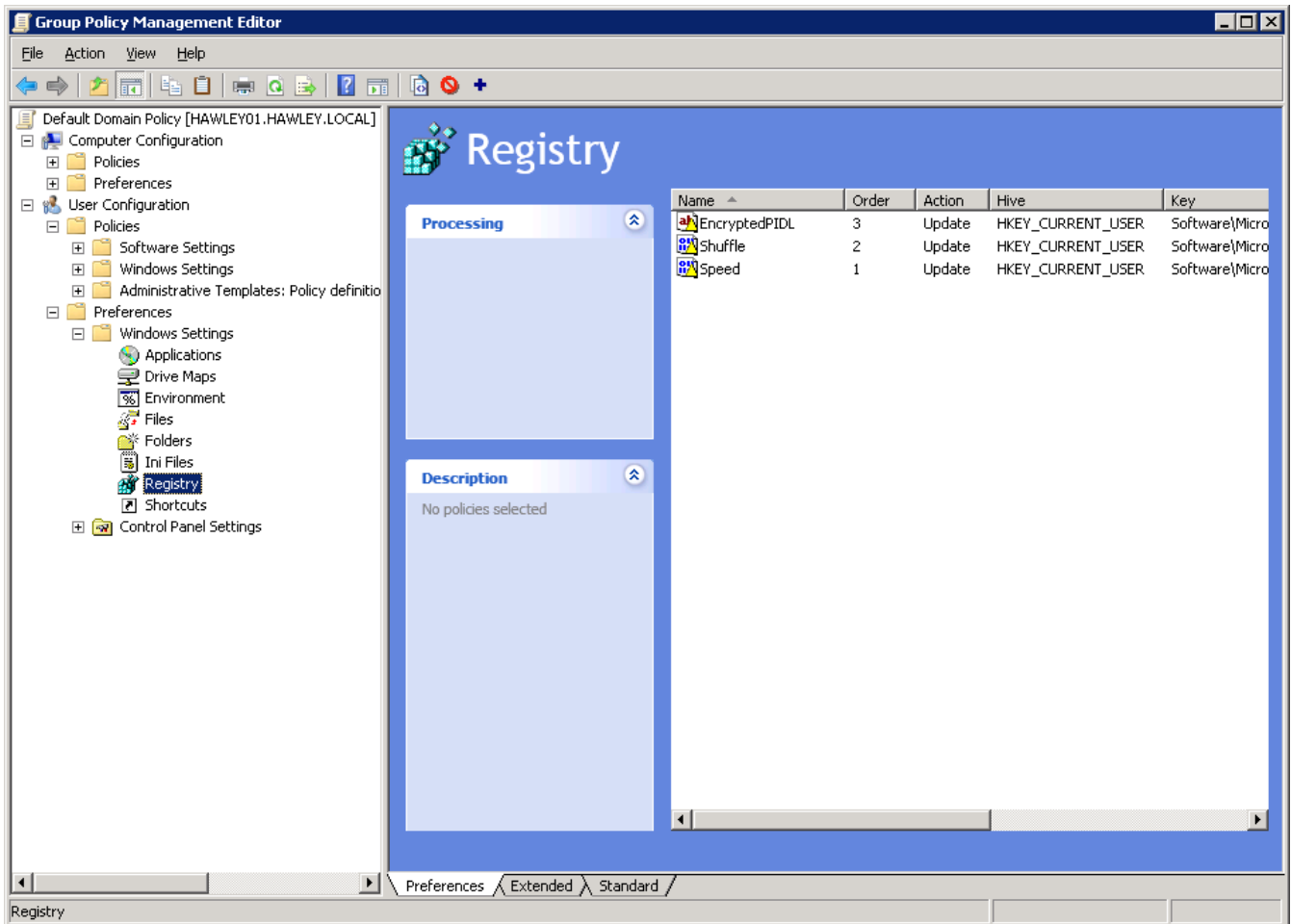


In the item "Force a specific screen saver" set to Enabled and set the path

c:\windows\system32\PhotoScreensaver.scr

Configure the other settings as required.

Next, move to the "Preferences" section in the same GPO and add the three registry keys from the one you exported earlier as below.
Note that when entering the string value for EncryptedPIDL, do NOT include the quotes.



That should be it. Run GPUPDATE / FORCE from the PC, log off and see if it works.